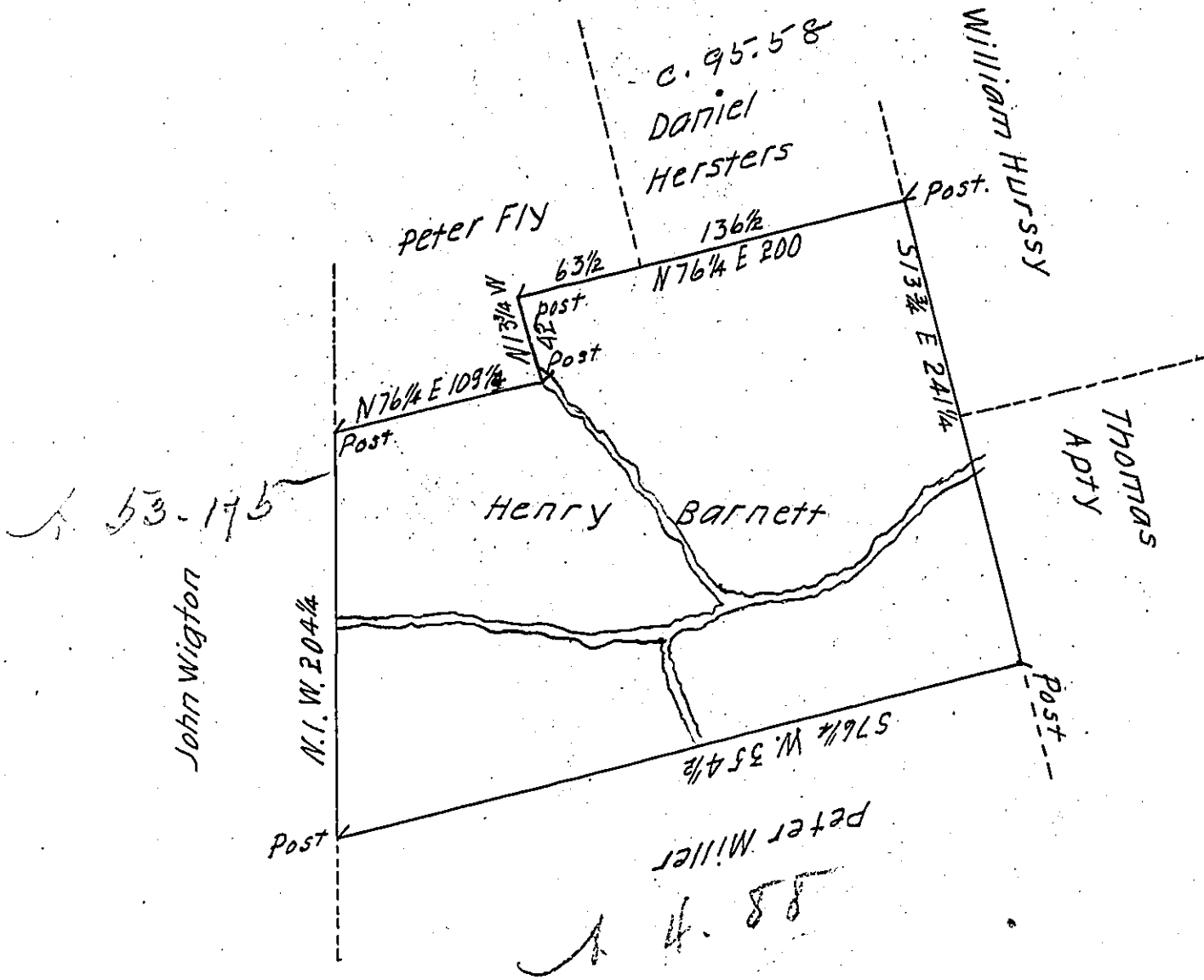


B. Grove -
PIKE



By virtue of a Warrant dated the 11th February 1794 Surveyed the
 14th November 1794 to Henry Barnett the above described tract of
 Land situate on Shoholy Creek about half mile from Brushy Bridge
 in the County of Northampton Containing four hundred Acres
 and the allowance of six Percent &c.

To Daniel Brodhead Esquire
 Surveyor General

P Geo Palmer DS

IN TESTIMONY that the above is a copy of the original remaining on file in
 the Department of Internal Affairs of Pennsylvania, made
 conformably to an Act of Assembly approved the 16th day of
 February, 1833, I have hereunto set my Hand and caused
 the Seal of said Department to be affixed at Harrisburg,
 this nineteenth day of April, 1911.

Henry Howell
 Secretary of Internal Affairs.